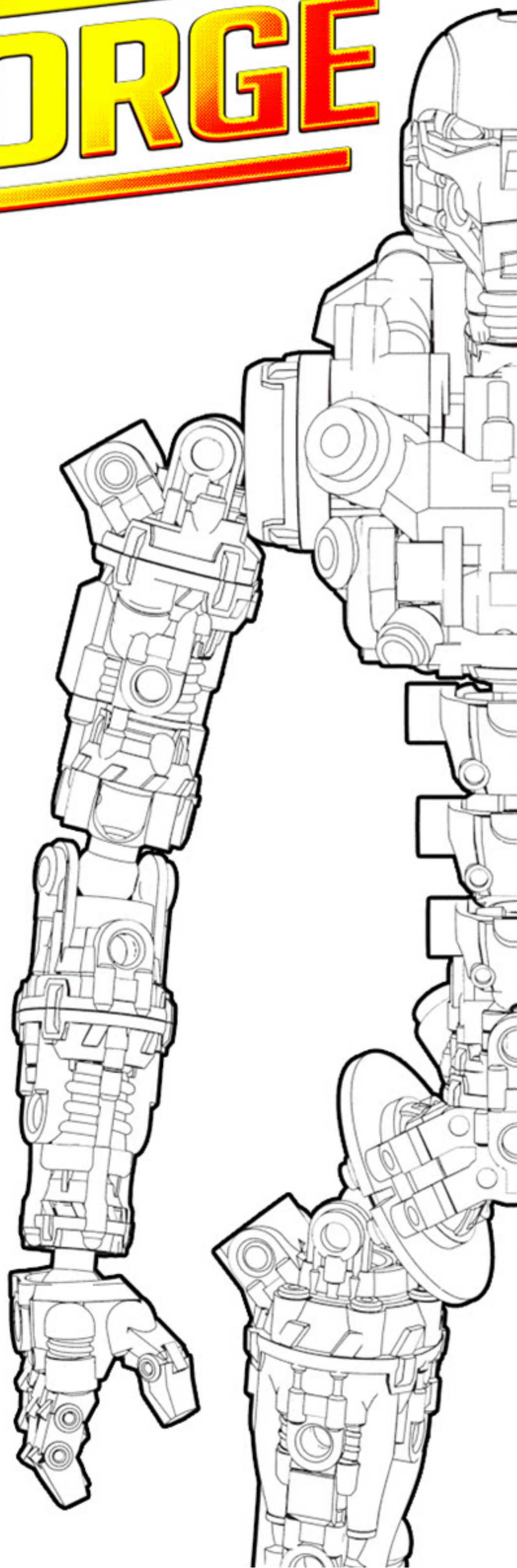


# TOY FORGE



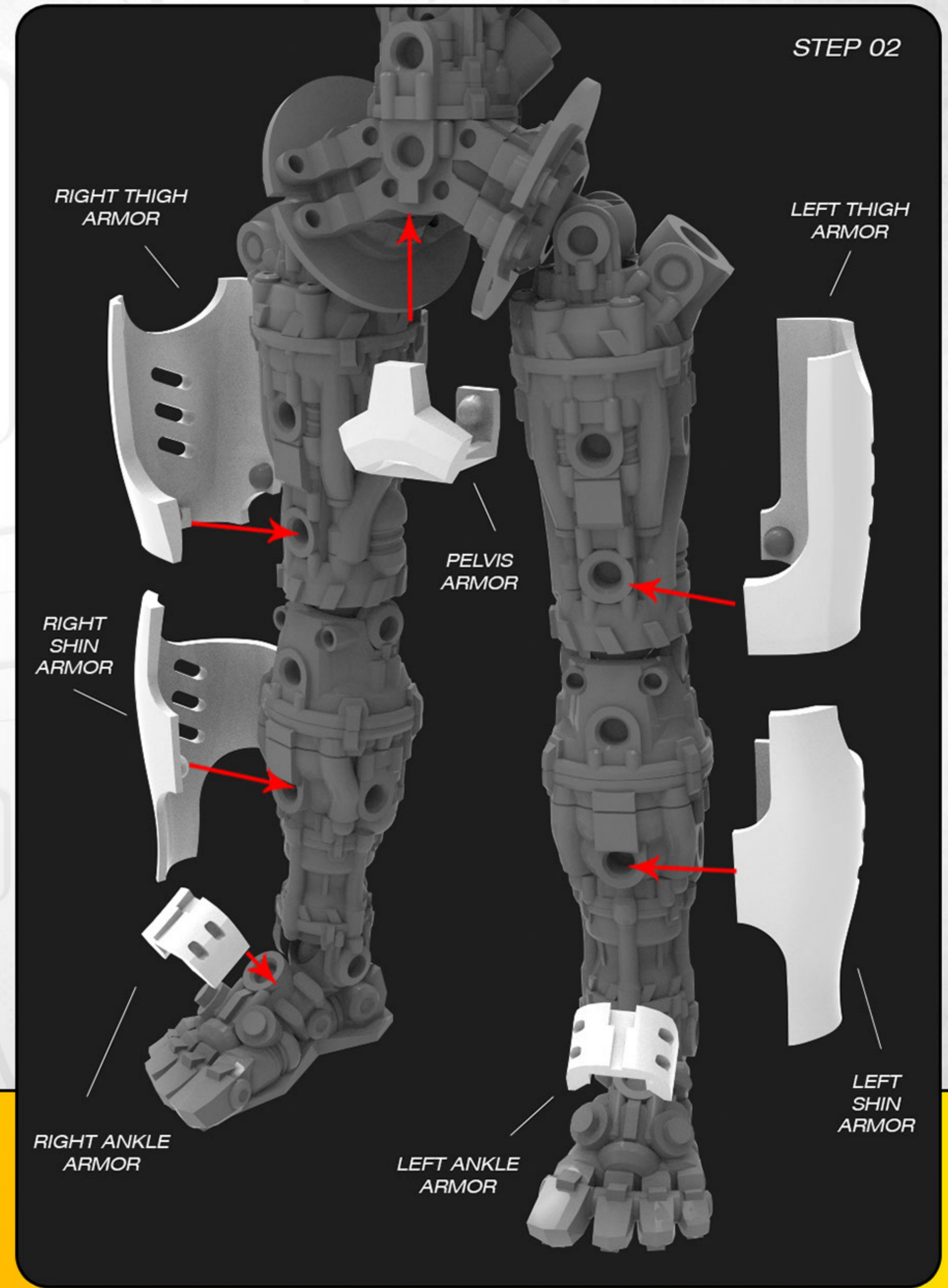
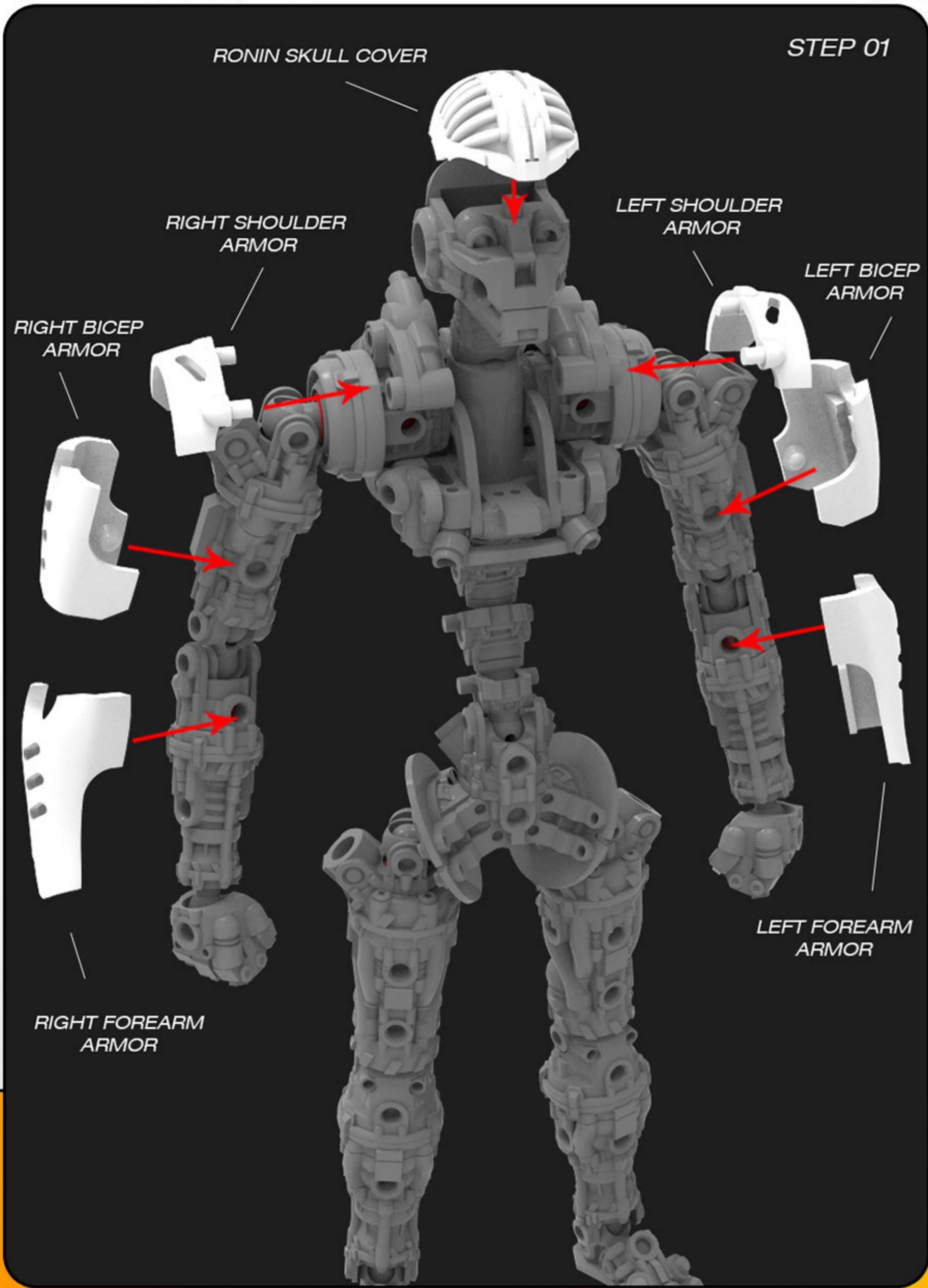
## ENDO | RONIN ARMOR KIT

3D PRINTED ACTION FIGURE ACCESSORY

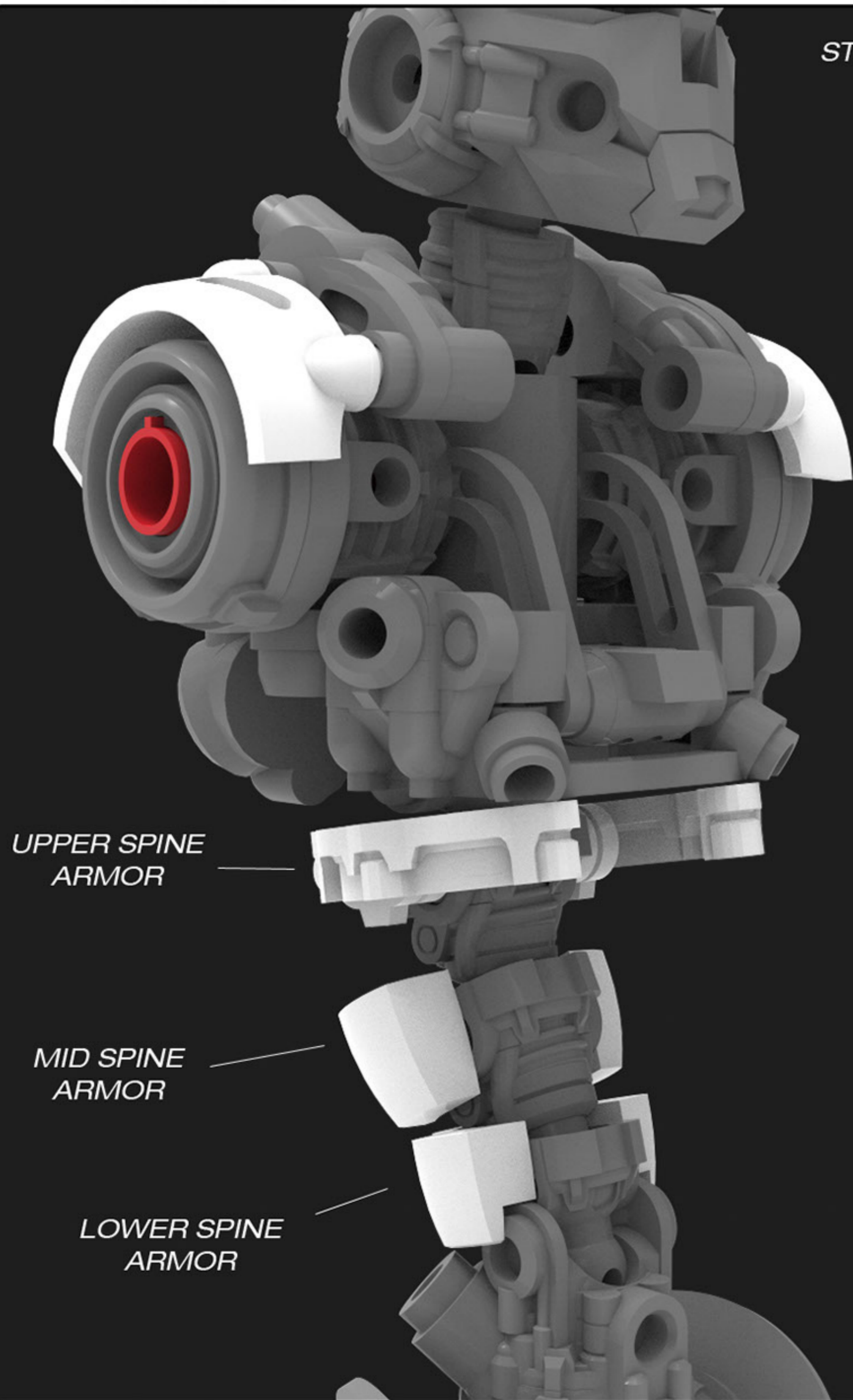


BUILD INSTRUCTIONS

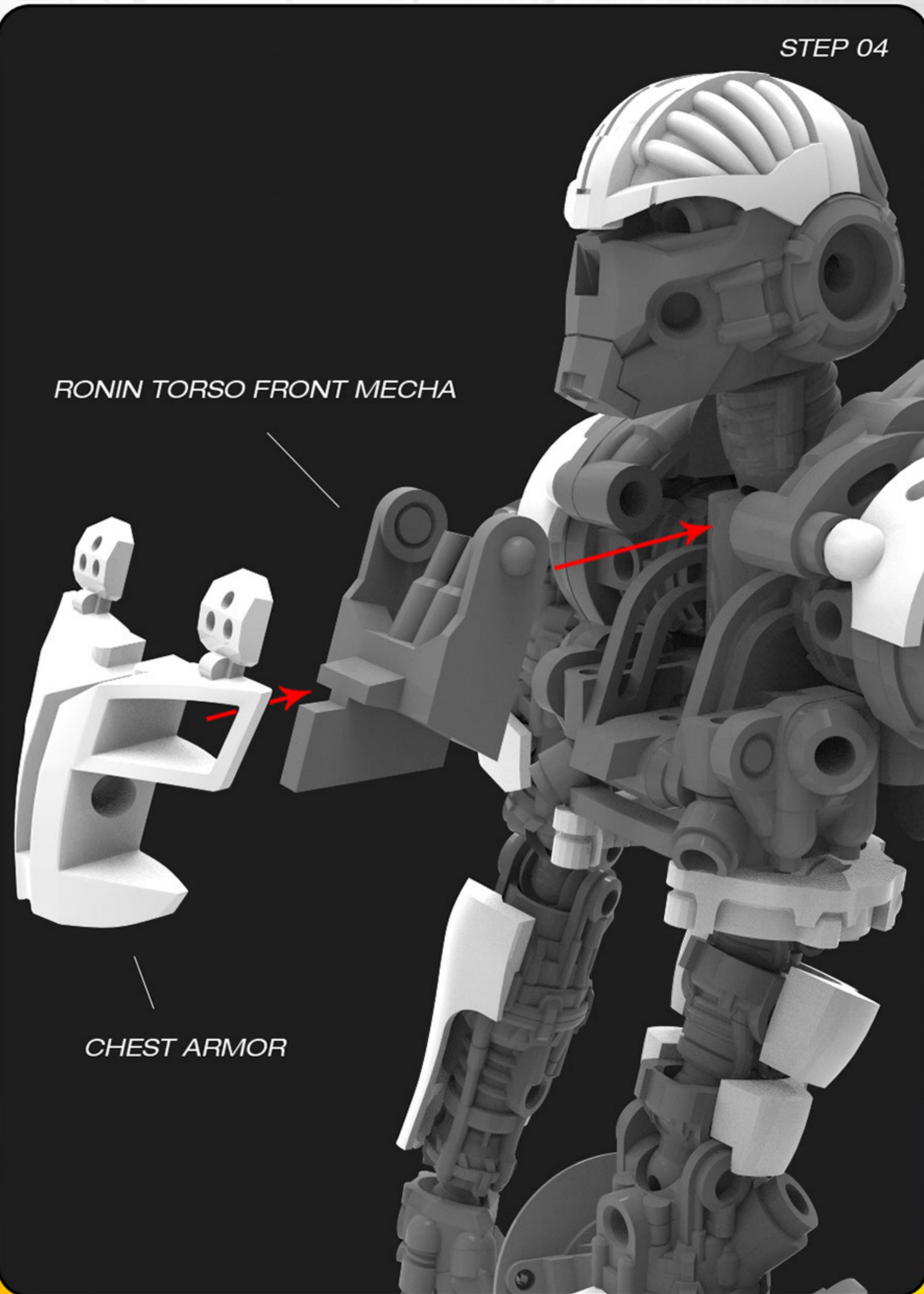




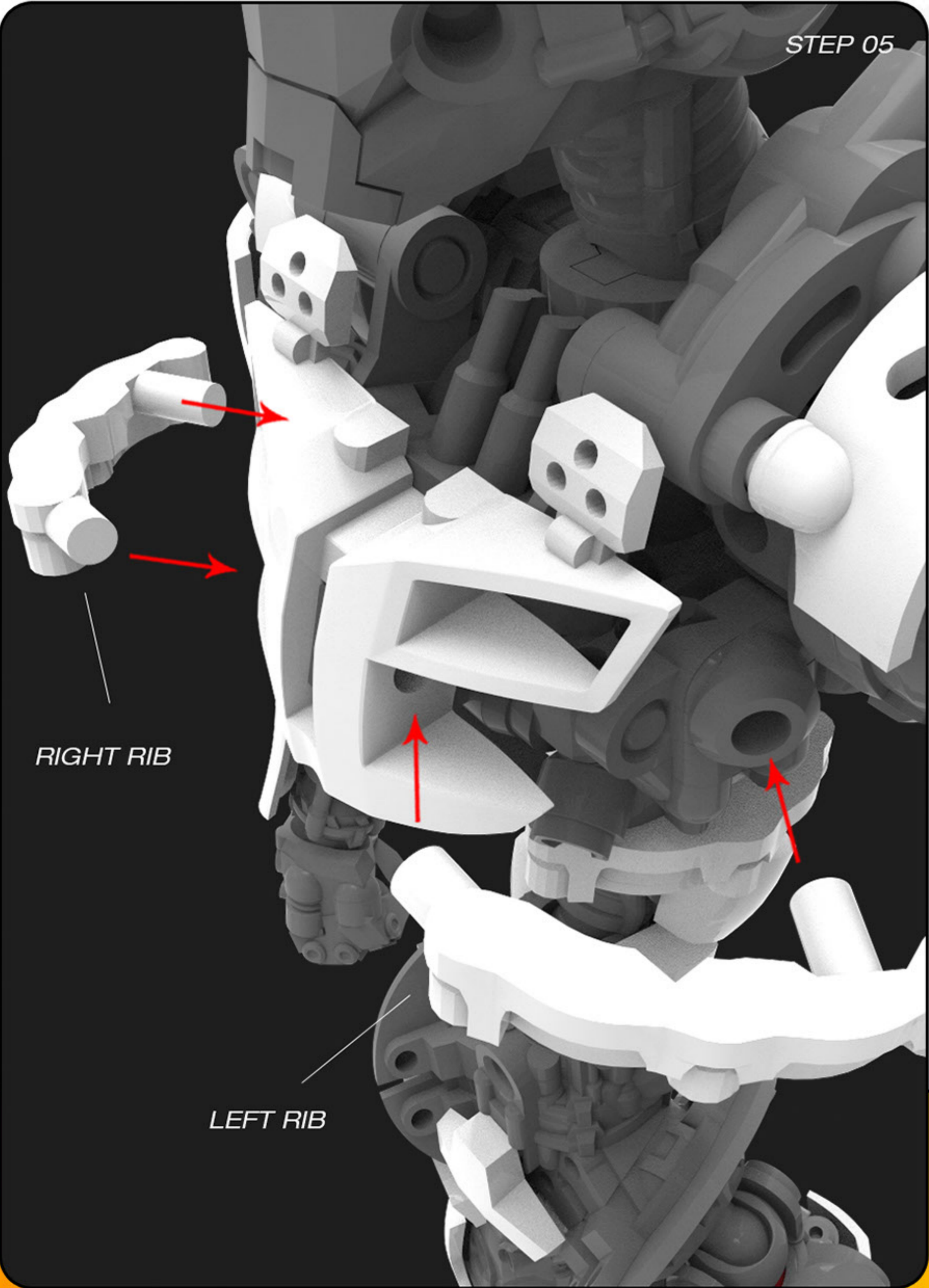
STEP 03



STEP 04



STEP 05

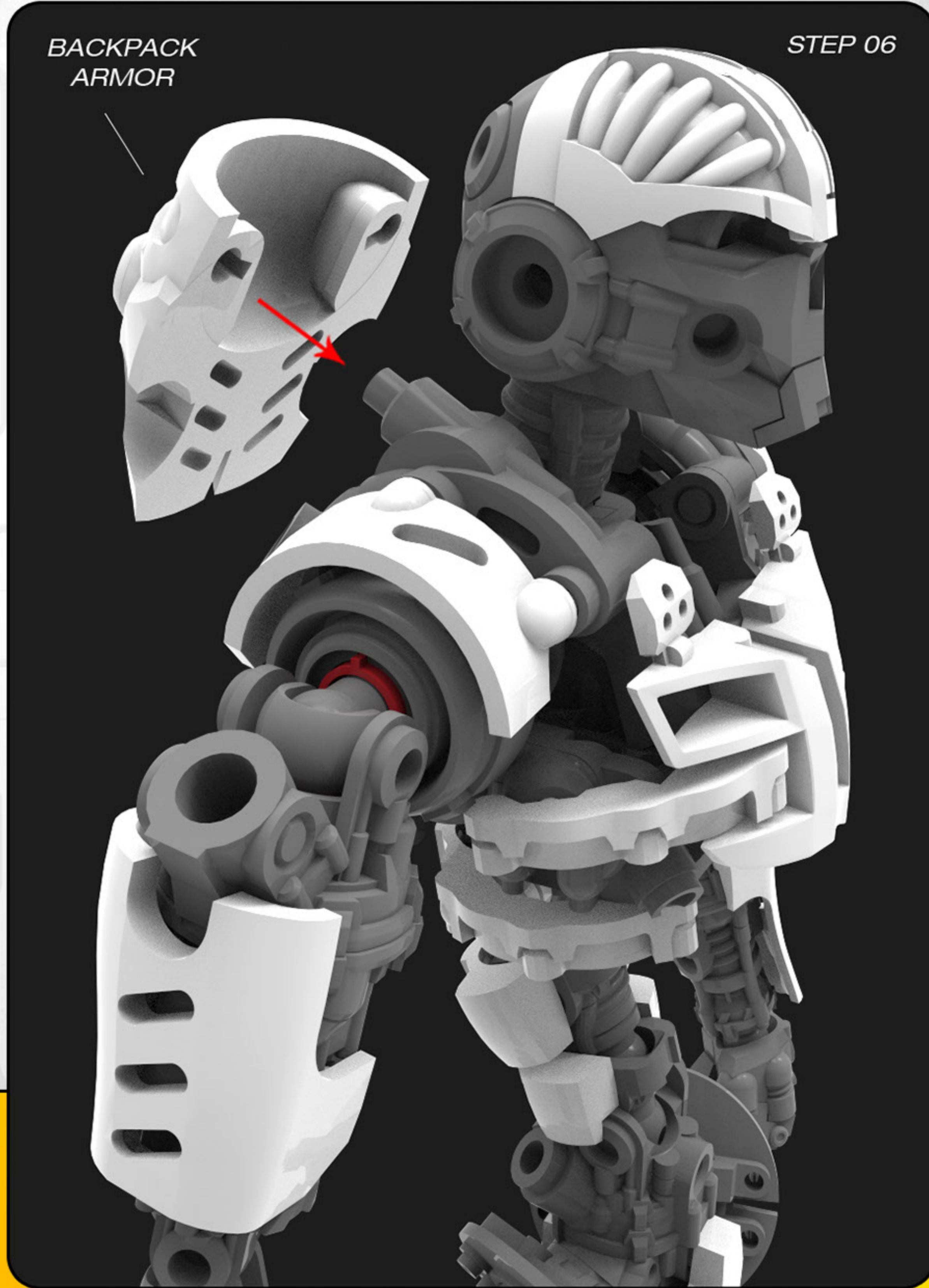


RIGHT RIB

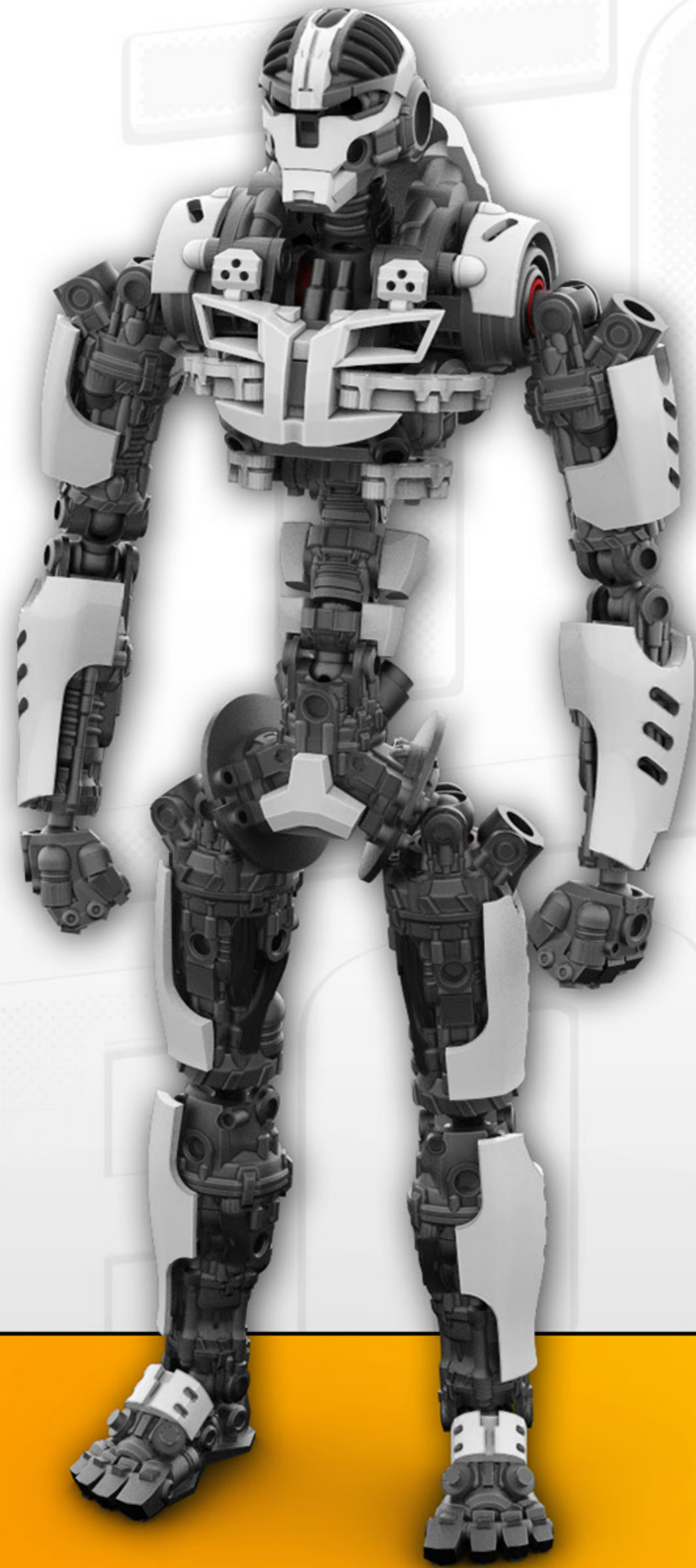
LEFT RIB

BACKPACK  
ARMOR

STEP 06



# PAINT SCHEME REFERENCE



THANK YOU FOR YOUR PURCHASE OF  
ENDO THE 3D PRINTED  
ACTION FIGURE.

FOR FURTHER INFORMATION PLEASE  
CONTACT  
TOYFORGE.IN@GMAIL.COM

## DISCLAIMER

PLEASE ENSURE THAT YOU READ AND ADHERE TO THE TERMS  
OF THE END USER LICENSE AGREEMENT THAT GOVERN ANY  
MATERIAL DOWNLOADED OR PURCHASED FROM  
WWW.TOYFORGE.IN

THIS DOCUMENT IS NOT TO BE SOLD OR DIGITALLY  
DISTRIBUTED IN ANY MANNER.

ALL THE IMAGES AND MATERIAL USED IN THIS GUIDE ARE  
COPYRIGHT © TOY FORGE WWW.TOYFORGE.IN

