



Frodo Chunkins Assembly Instructions

Notes About the Assembly

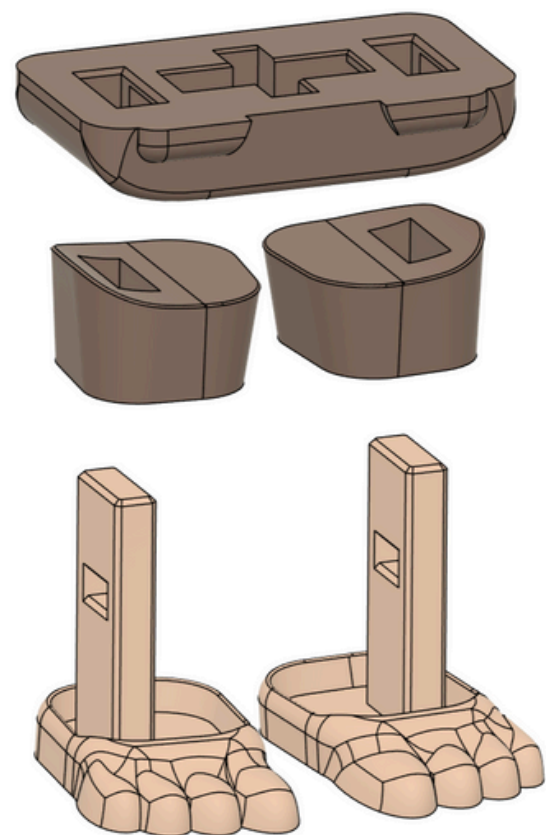
The P#'s refer to plate numbers in the STL files.

Everything is meant to press-fit, so don't be afraid to push hard.

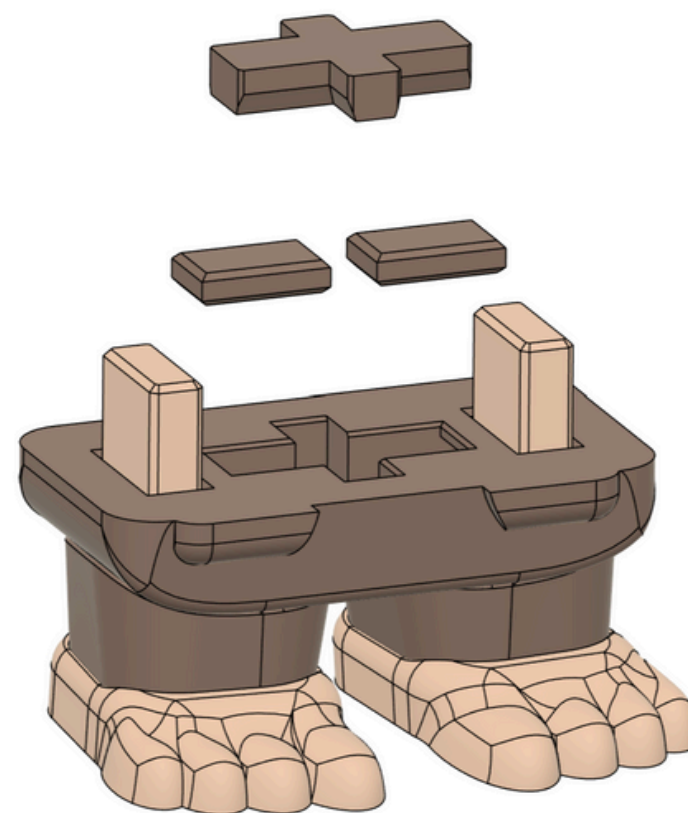
If any of the parts are too tight or loose, simply size them down or up by 0.5-1% and try again. Matte filament works the best.

If you're using a printer that can cancel failed objects, you may want to split the plates into objects to take advantage of that, just in case.

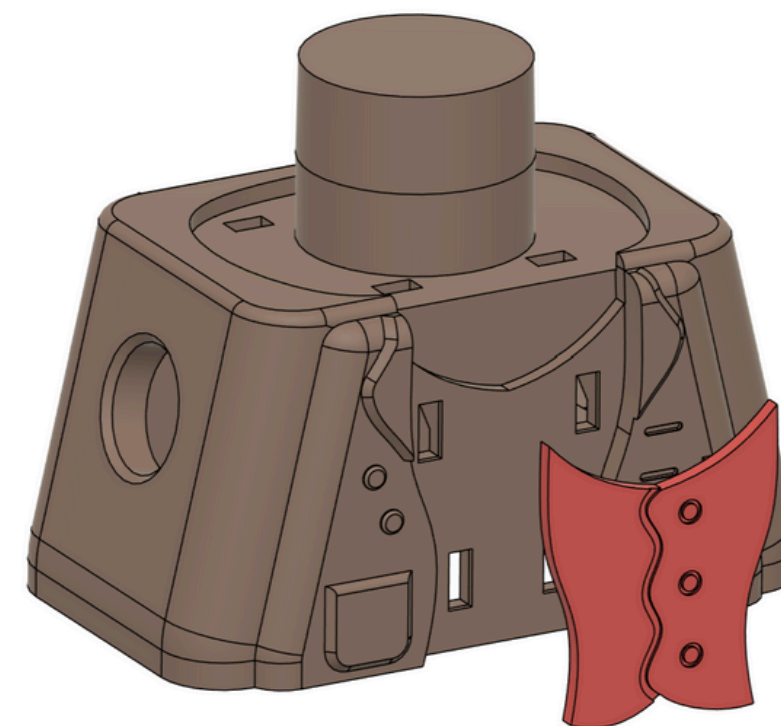
1 (P1&2)



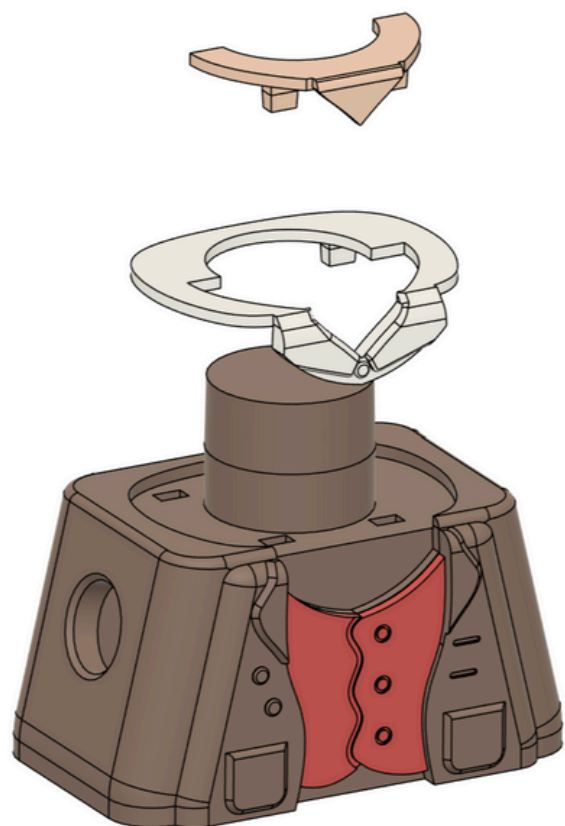
2 (P1)



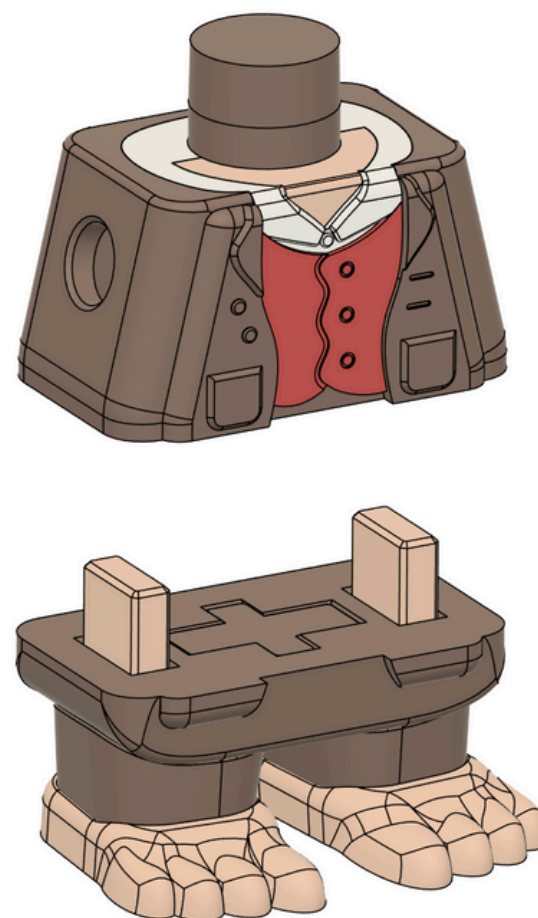
3 (P1&3)



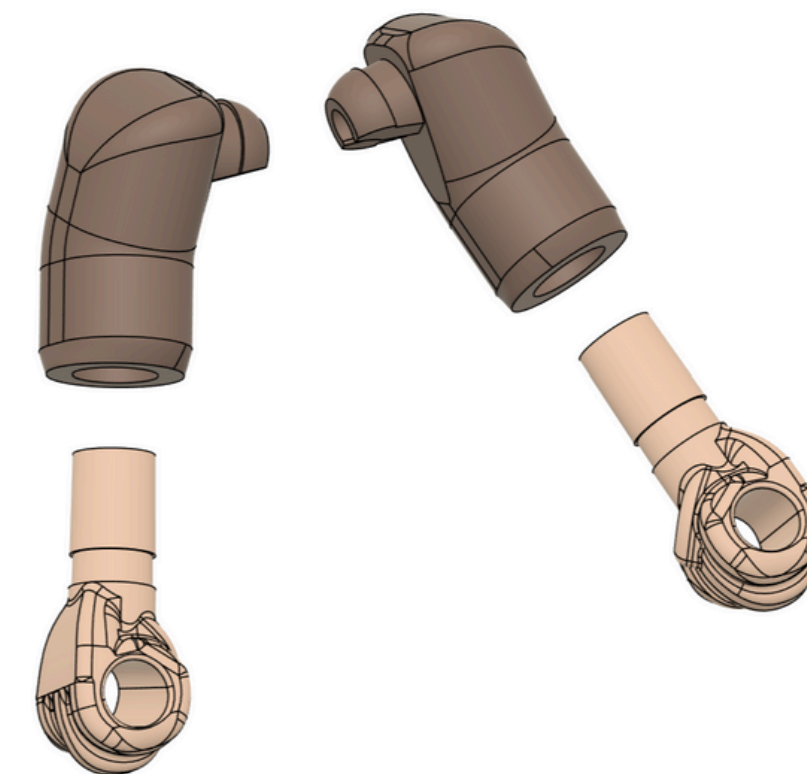
4 (P2&4)



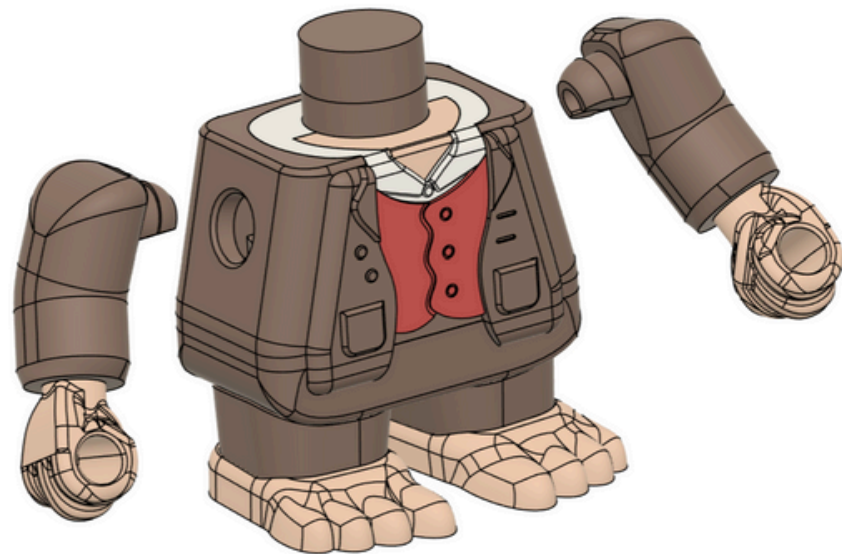
5



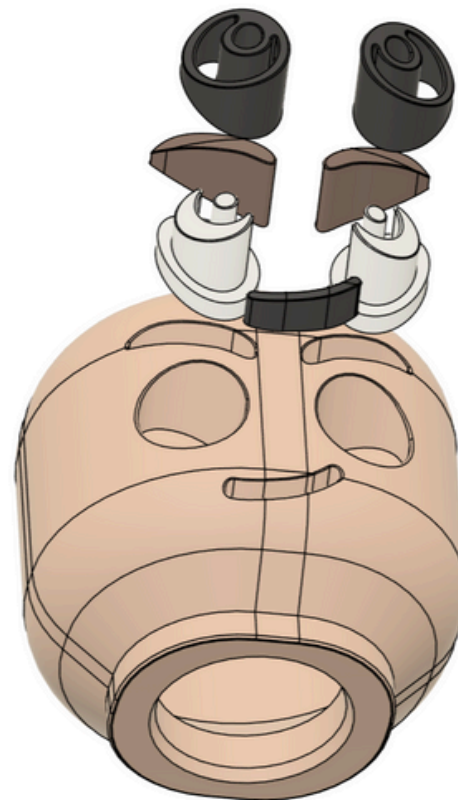
6 (P1&2)



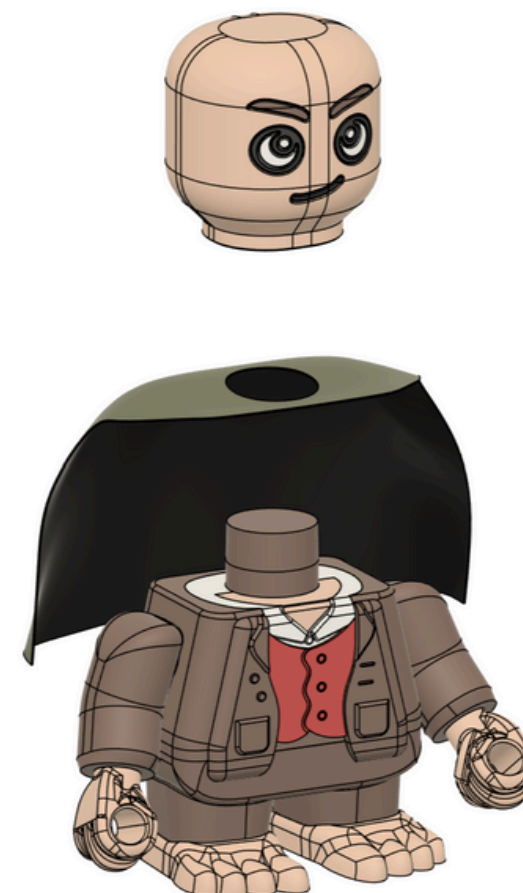
7



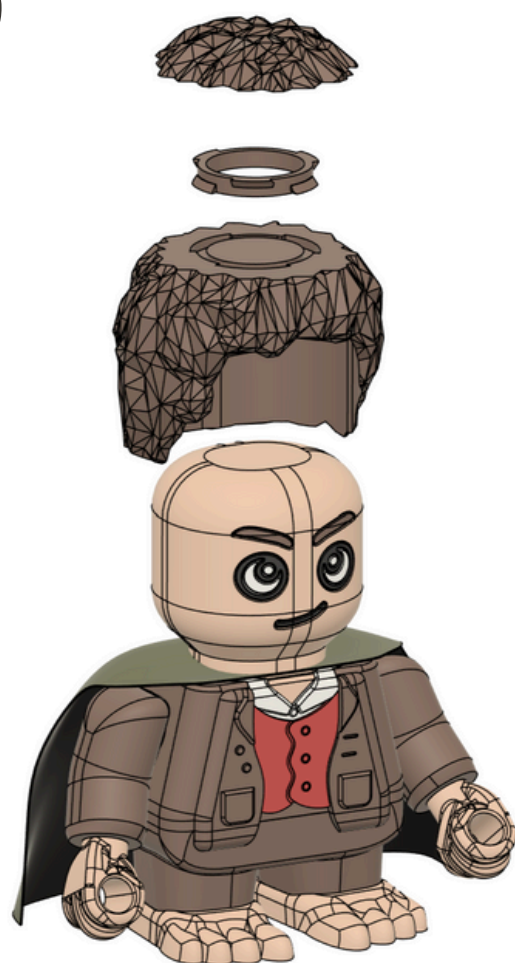
8 (P1,2,4&5)



9 (P9)



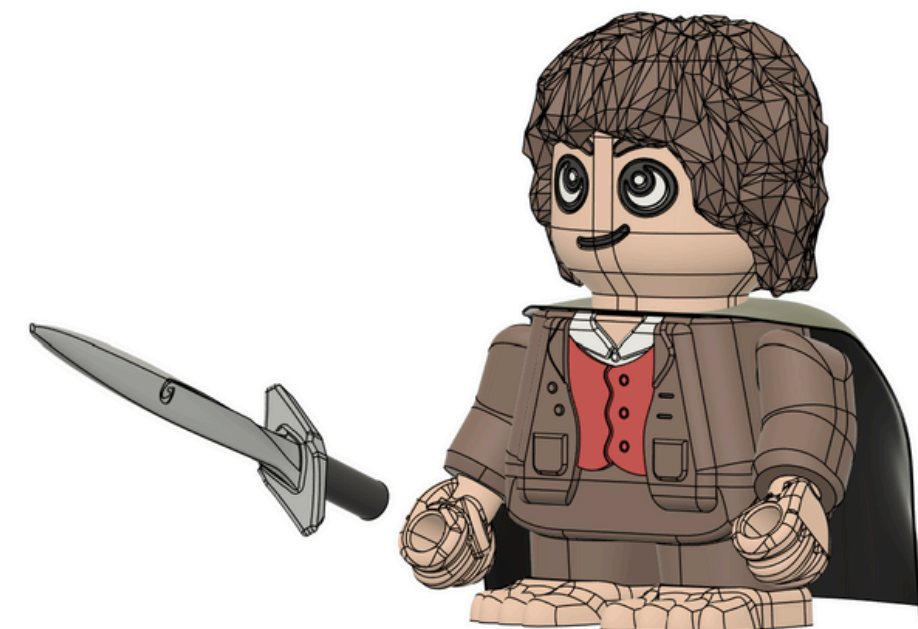
10 (P6)



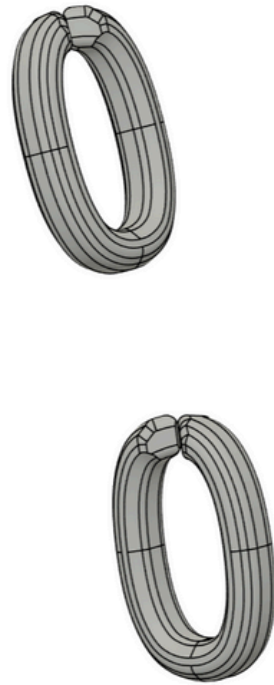
11 (P5&7)



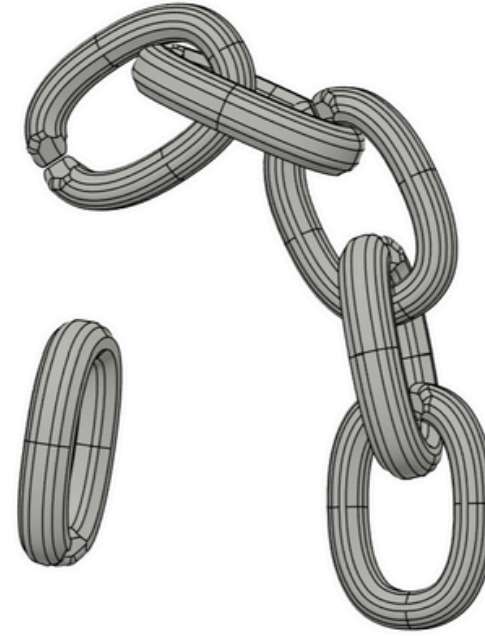
12



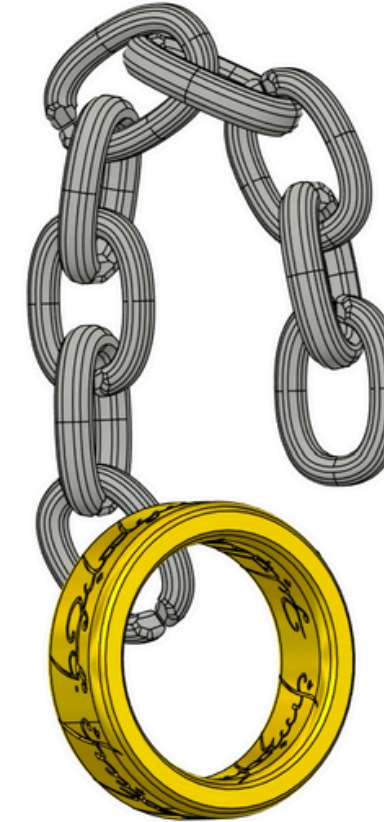
13 (P7)



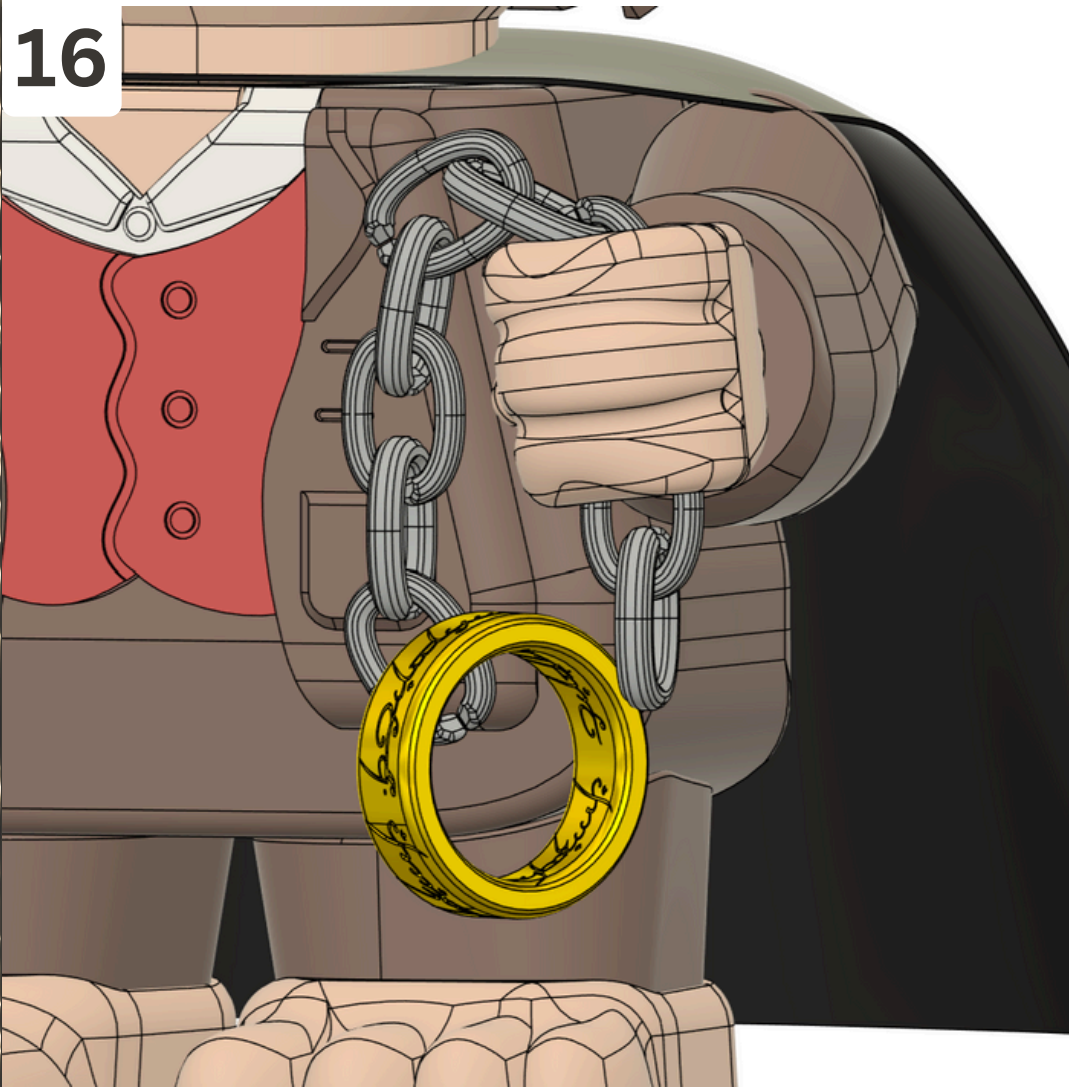
14 (P7)



15 (P7&8)



16



17 (P7)

