

Materials

Filaments I Used



Pink



White



Brown



Green



Need Help? Ask questions on discord



PRINT INSTRUCTIONS

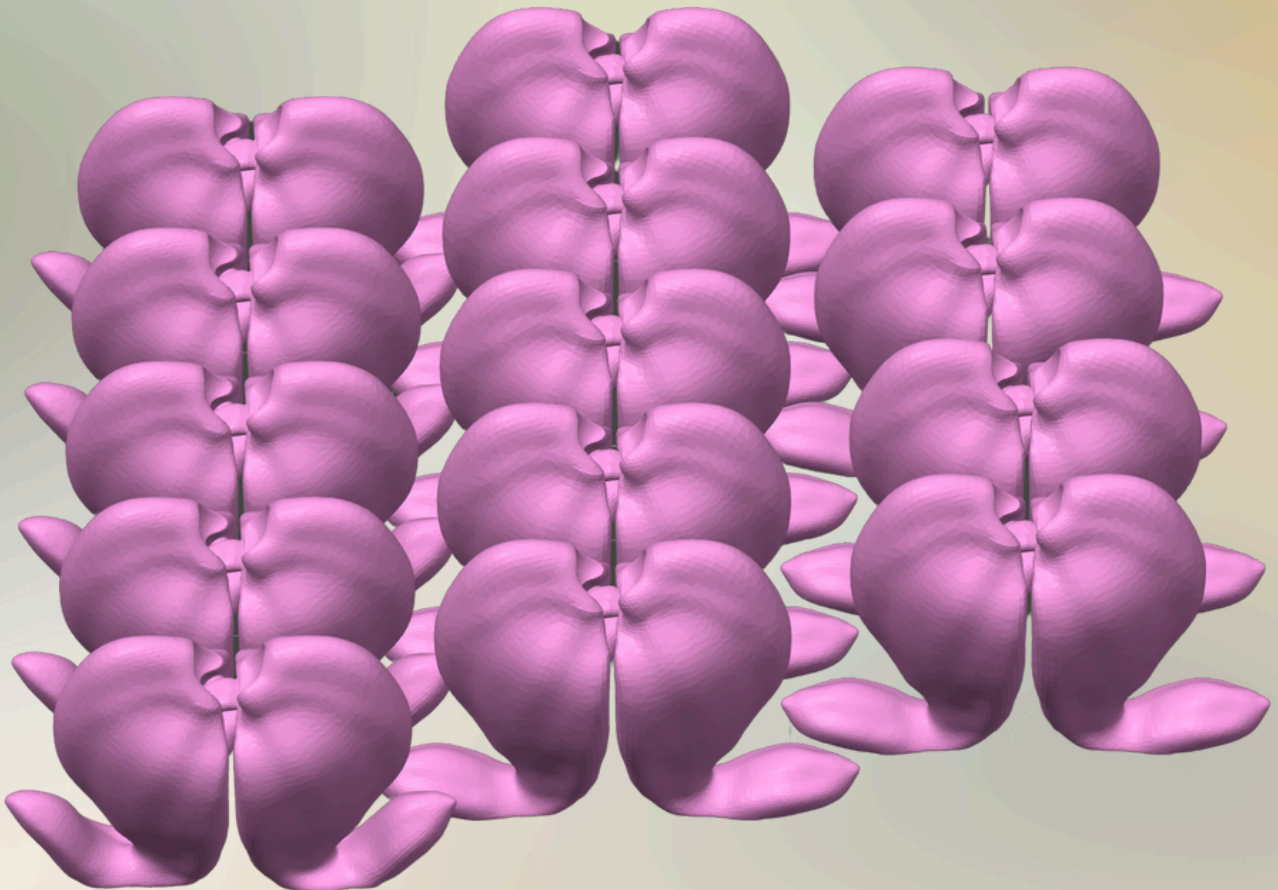
Flowers

- ***Use Stock Settings***

Did You Know?

*You can skip these steps
by using the Easy Print 3mf
File*

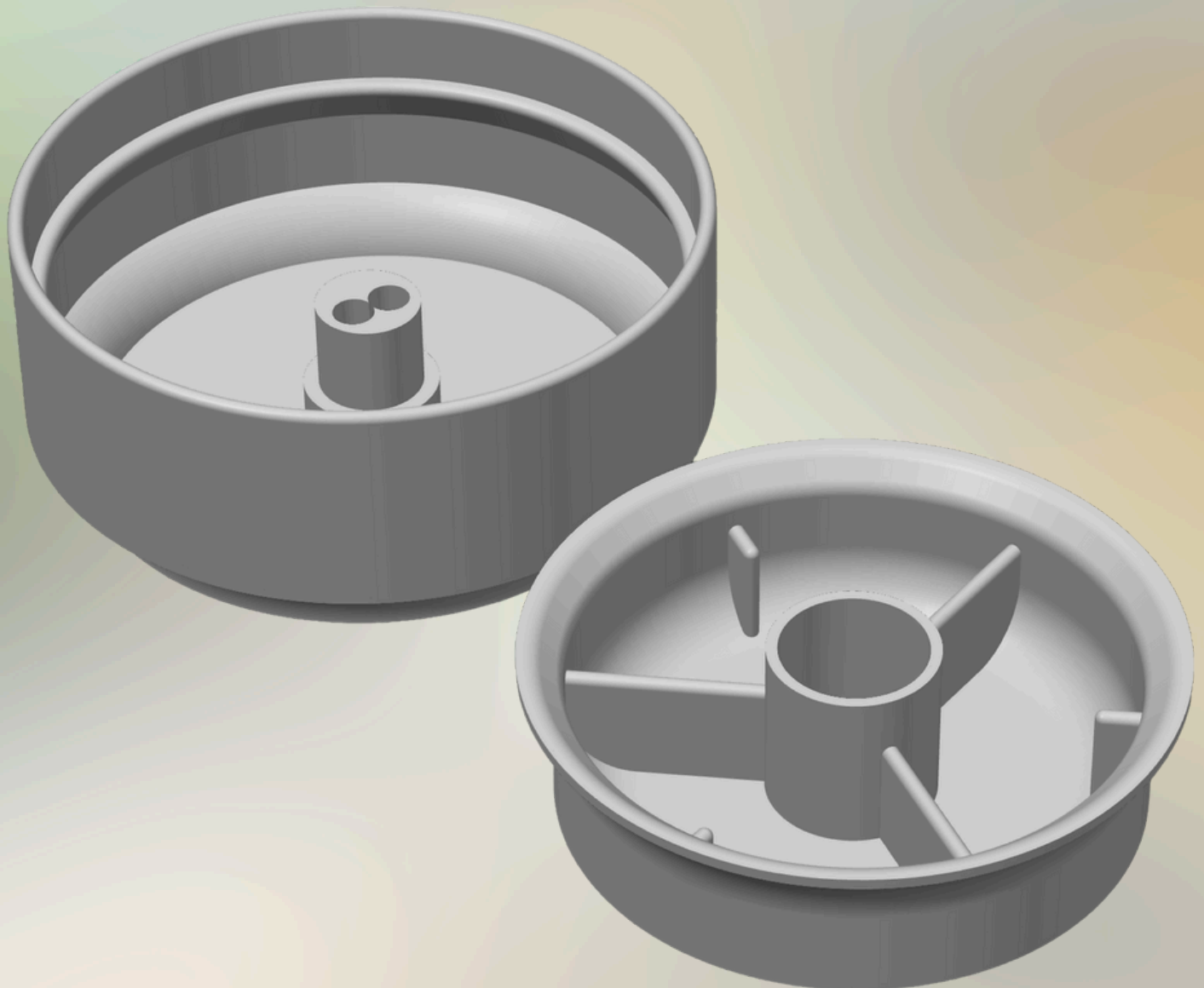
[Jump to Assembly Instructions](#)



PRINT INSTRUCTIONS

Pot and Carousel

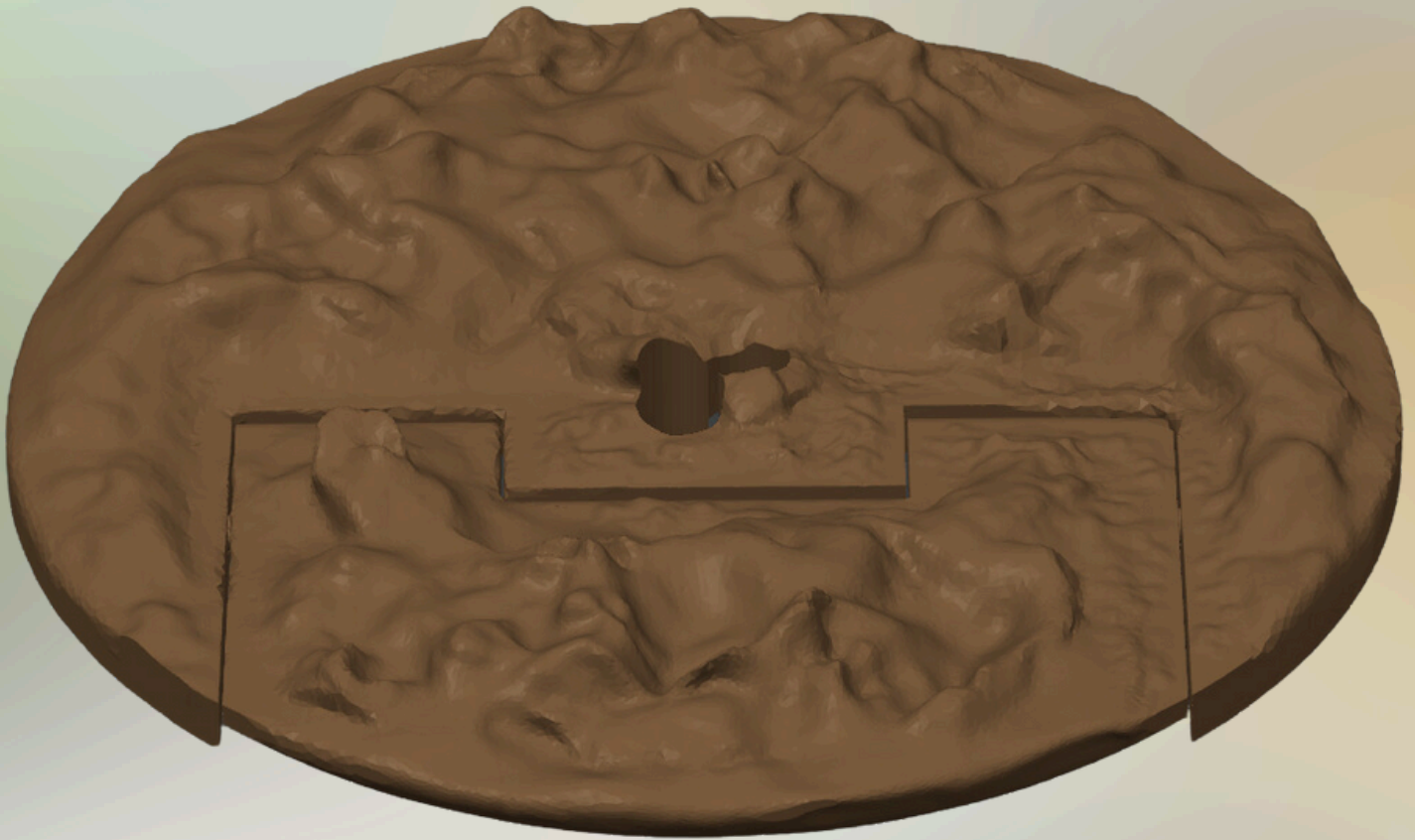
- ***Use Stock Settings***



PRINT INSTRUCTIONS

Dirt

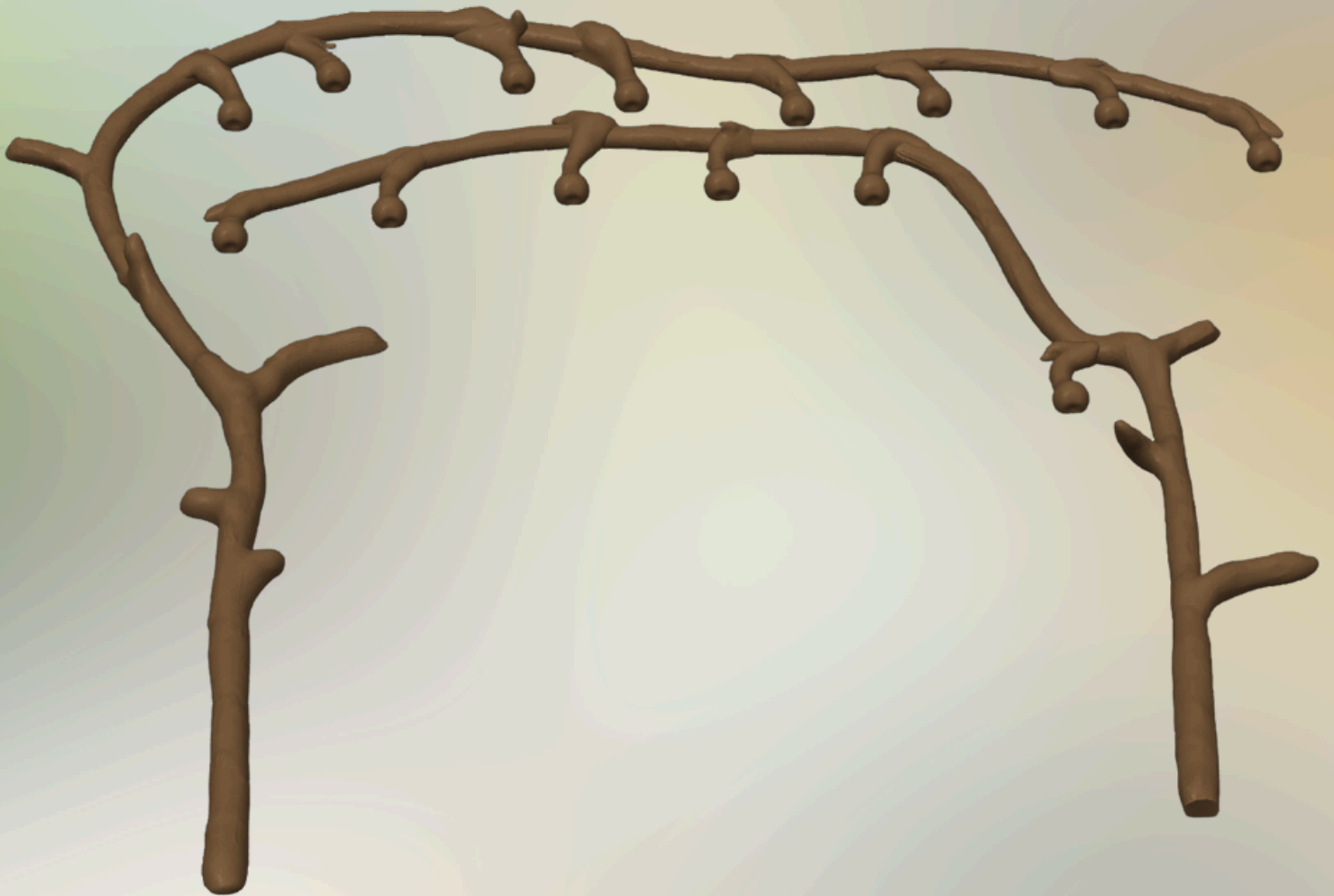
- ***Use Stock Settings***



PRINT INSTRUCTIONS

Branches

- ***3 wall loops (For added Strength)***



PRINT INSTRUCTIONS

Leaves

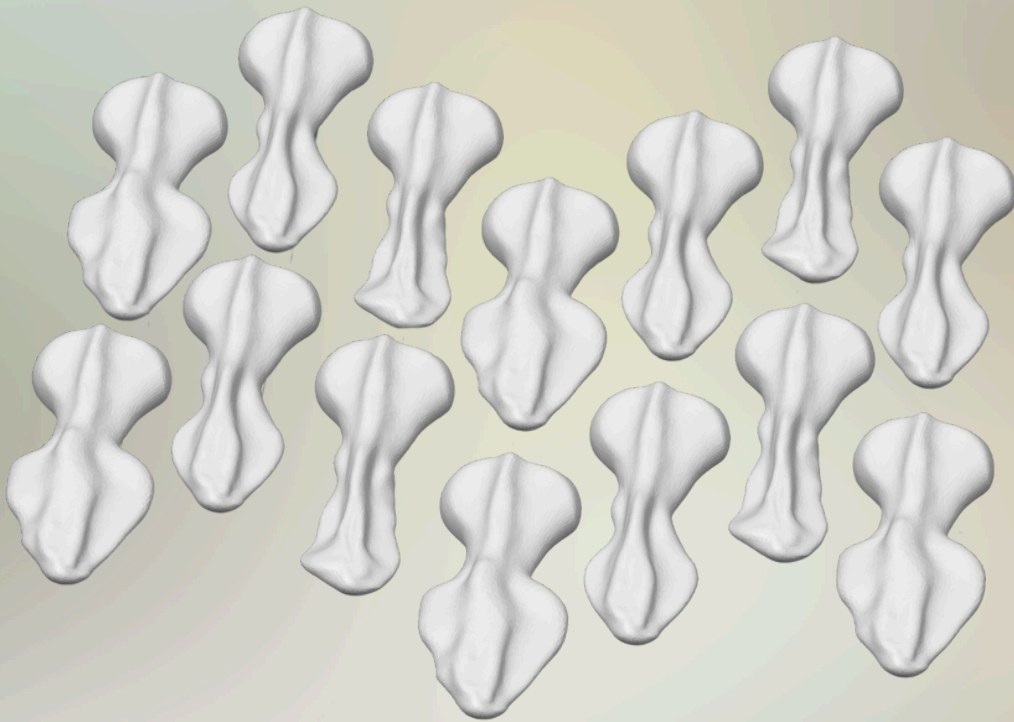
- ***Use stock settings***



PRINT INSTRUCTIONS

White Petals

- ***Use Stock Settings***



ASSEMBLY INSTRUCTIONS

Assemble the pot

1

Place carousel in pot



2

Place dirt in pot (on top of carousel)



ASSEMBLY INSTRUCTIONS

Add branches to the pot

3

Push stems
through holes in
dirt *and* pot



ASSEMBLY INSTRUCTIONS

Add notes to flowers (x14)

4

*Cut paper and
then roll up*

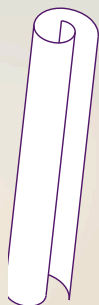
2 in (5 cm)



*1 in
(2.5 cm)*

5

Insert Note OR white petal into flower



ASSEMBLY INSTRUCTIONS

Add flowers to the Branches (x14)

6

Hold stem and push
flower into place

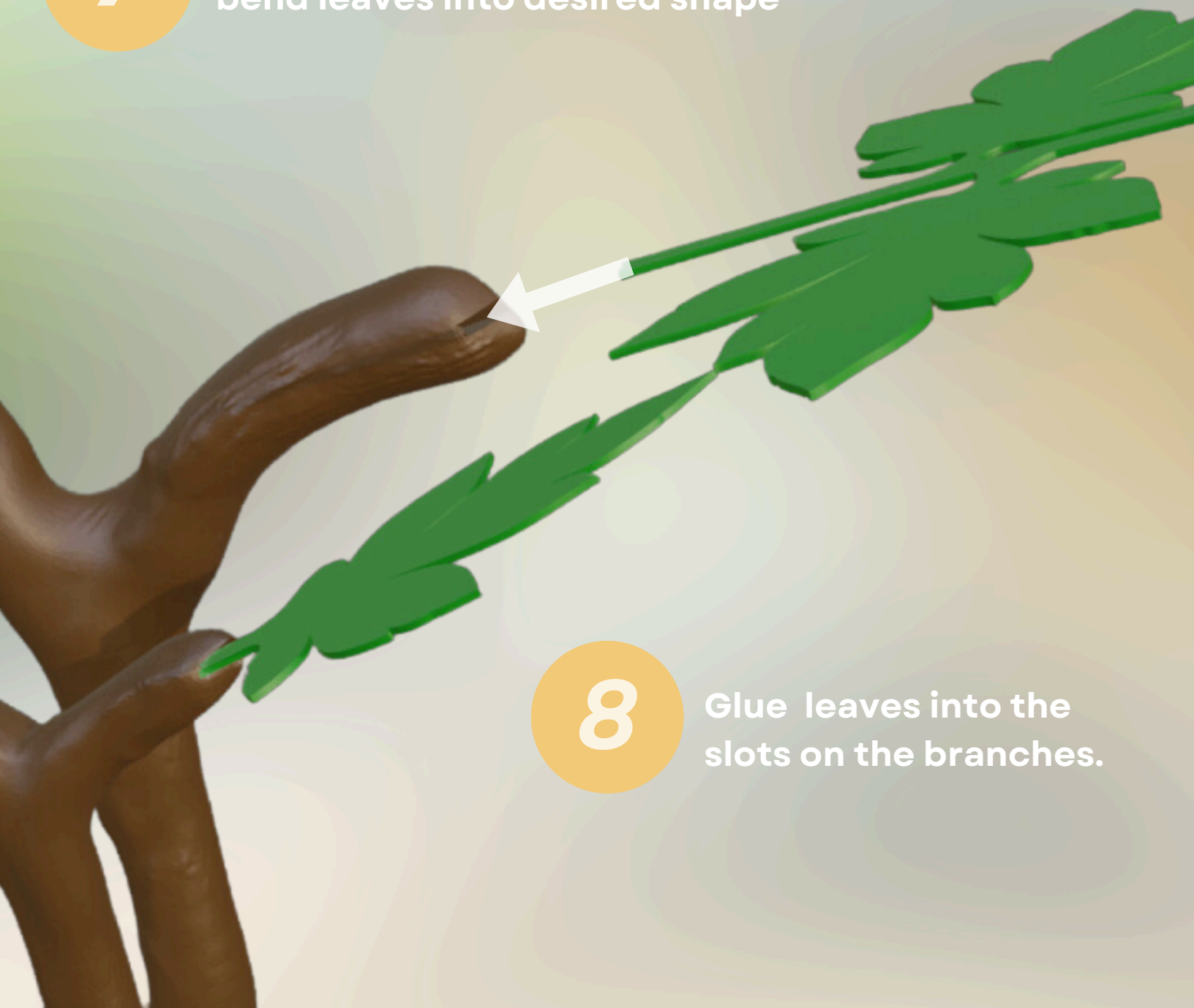


ASSEMBLY INSTRUCTIONS

Add leaves to the branches

7

Use a heat gun or hair dryer to bend leaves into desired shape



8

Glue leaves into the slots on the branches.

ASSEMBLY INSTRUCTIONS



Done